

Starting valves and filling valves in modular block design serve to raise the pressure gradually in pneumatic systems when they are being started, for example after emergency shut-off. When switched on, throttles release at first only a small orifice. Only when the pressure has reached about 60% of operating pressure is the full orifice opened. In the opposite direction (relieving) the full orifice is opened by means of a non-return valve. In combination with *ewo*-equipment such as the 3/2-way valve, ball valve or solenoid valve a complete on-and-off unit can be assembled. Port sizes G^{1/4} to G1.

Only suitable for closed systems!

Technical Data

	I		Size		II
Thread	G ^{1/4}	G ^{3/8}	G ^{1/2}	G ^{3/4}	G1***
Nominal rates of flow*	1200NI/min	1400NI/min	3800NI/min	4200NI/min	
Point of dispatch**	about 0,6 x working pressure				
Working pressure range	2 to 25bar				
Max. surrounding temperature	50°C				
Material	zinc alloy				
Weight	295 g				730 g (G1 = 1190 g)

* measured at 6bar pre-pressure (p₁) and Δp = 1 bar.

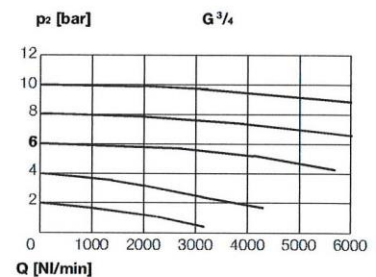
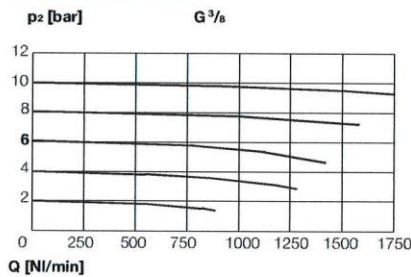
** profile completely opened

*** mounting plates G 1

Article no. VA 26 is composed of the following articles:

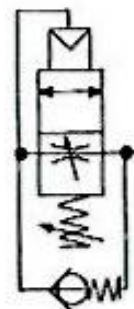
VA 25 + Mounting plates set VZ 500

Rates of flow



Dimensions [mm]

Thread	A	B	C	E	F	H	J	K	øL	M
G ^{1/4} , G ^{3/8}	48	54	48	24	24	30	43	14,5	4,4	53
G ^{1/2} , G ^{3/4}	70	72	70	36	35	36	62	18	5,4	75
G 1	125	72	70	36	35	36	62	18	5,4	75



Department eDocumentation

Phone +49 7125 9497-41, -42, -53, -260, -330

Fax +49 7125 9497-99

e-mail: eDocumentation@riegler.de

edition 01/2024

RIEGLER & Co. KG

www.riegler.net

Subject technical changes.

1.2

Mounting plates set G 1

